

## DESIGNING EFFICIENT COMPOSTING SOLUTIONS FOR COMMERCIAL KITCHEN WASTE MANAGEMENT

Prof. Adam Havlíček, Filip Šimka, Miloš Nikolić, Milena Stojanović, Gábor Kovács, Ondřej Blažek, Jiří Procházka

### ABSTRACT

Solid waste management (SWM) is worldwide problem and it is becoming more & more difficult day by day due to rise in Population, Industrialization, and change in our life style . Kitchen waste can be easily decomposable. The conversion of kitchen waste into value Population explosion rapid industrialization and trend of urbanization have resulted in massive migration of people from rural to urban area as a result 100 of tonnes of waste are being generated. added is of more importance and on the other hand it controls a pollutants. The Nitrogen , Potassium Phosphorous, Moisture Content, Organic, Carbon & C:N Ratio was analyzed.

In the past few years there has been tremendous increase in food waste generation due to rapid urbanization and industrialization. Population is also increasing and is accepted to reach 9.5 billion by 2050. Both of these factors have put an emphasis to employ novel techniques for management of waste generated so that waste generation could be reduced to a minimum or these waste could be converted in some valuable product.

The aim of these work was to test combination of different additives with kitchen waste to improve the treatment efficiency and assess the optimum period required in each method to produce good quality compost. A 35 days composting helped in mass reduction moisture management, and pathogen reduction . Different additives gives different values of the nitrogen, phosphorus, potassium, moisture content, C/N ratio, etc. These tests help more for management and use of kitchen waste as compost

---

### 1. INTRODUCTION

Municipal Solid Waste (MSW) includes commercial, Institutional, Industrial, Agricultural. The production of kitchen waste significantly increases along with the development of Restaurant, Industry as well as increase in consumption in India. More than 90% of MSW wastes were sent for unscientific landfilling creating problems to public health and environment .From MSW the kitchen waste can be decomposed easily ,Hence management of kitchen waste reduces or eliminates adverse impact on land contamination or pollution of soil and water.

Improper handling of solid wastes health hazard and cause damage to the environment. The main risk to human health arises from the breeding of disease vectors like flies, mosquitoes and rodents. Solid wastes are ideal breeding places for pathogens . Improper disposal of solid waste has resulted contamination. The environmental damage caused by wastes is mostly aesthetic in nature. Uncontrolled dumping destroys the beauty of country. There is danger of water pollution when the leachate from a refuse dump enters surface or ground water resources. Uncontrolled burning of open dumps can cause air pollution.

Composting is a biochemical process in which organic material are biologically degraded, resulting in the production of organic by products and energy in the form of heat .Heat is trapped within the composting mass, leading to the phenomenon of self heating that is characteristic process.

It is ideal way to recycle organic wastes from our home and community .compost will provide nutrients to the plants not only nitrogen , potassium and phosphorus, but also the secondary and trace elements.

### 2. Materials And Methods

#### Collection of material -

The cowdung (25 days old) was procured from nearby dairy farm. The moisture content was maintained at about 40-70%. The kitchen waste procured from 1 Apartment and 3 Hotels in Gadhinglaj city. The waste was cut into small pieces by using kitchen waste shredder.

The earthworms are collected from vermicompost centre located in Hirge village in Gadhinglaj Taluka .

### 3. EXPERIMENTAL SETUP

4 Sets of experiments were conducted .

In each set 3 separates tests based on weight variation are conducted. The ratio of kitchen waste to the additive is kept as 1:0.5 , 1:0.075 , 1:1 .

#### Pre decomposition experiment –

The plastic bags of size 12’ x 4’ x 4’ was filled with a mixture of different additives ratio with kitchen waste . It was daily sprinkled with water so that it gets decomposed. Also this waste was turned up and down for proper aeration and decomposition experiment continued for 45 days.

#### Composting Experiments –

In this study the 12 plastic bags were taken . The composition for composting is made as follows –

The names are given to the bags as per its additives –

Kitchen Waste + Cowdung

Kitchen Waste + Cocopeat

Kitchen waste + Compost Maker

Kitchen Waste + Vermicompost

In each bag as per the additives,the ratio of KW to additives is kept in ratio 1:0.50 , 1:0.75 , 1:1 . The bags are kept under the shade . The whole setup was maintained for 45 days till the finely granular compost.

During composting process the material was analyzed for different Physio-Chemical attributes such as PH , N , P , K , Micro-organisms,C/N ratio.

The Moisture content is analyzed by using Gravimetric Method.

The Nitrogen Content is analyzed by using Kjeldahl Method.

The Phosphorous is analyzed by using Gravimetric Quinslinium Phosphomolybdate Method.

Potassium is analyzed by Gravimetrically Method.

### 4. RESULT

Kitchen waste +Cowdung

RATIO 1:1	PH	N	P	K	O.C
7 DAYS	6.04	0.24	0.31	0.21	45.90
21 DAYS	6.54	0.36	0.72	0.32	31.42
35 DAYS	7.21	0.89	1.28	0.54	22.14

Kitchen waste+cocopeat

RATIO 1:1	PH	N	P	K	O.C
7 DAYS	5.94	0.32	0.22	0.20	56.14
21 DAYS	6.36	0.49	0.45	0.26	49.11
35 DAYS	6.94	0.92	0.72	0.39	36.17

Kitchen waste +soil +earthworm

RATIO 1:1	PH	N	P	K	O.C
7 DAYS	6.41	0.21	0.34	0.16	40.14
21 DAYS	6.94	0.39	0.47	0.30	31.11
35 DAYS	7.23	0.75	0.98	0.42	20.16

Kitchen waste+compost maker

RATIO 1:1	PH	N	P	K	O.C
7 DAYS	5.81	0.31	0.39	0.23	42.19
21 DAYS	6.19	0.53	0.58	0.39	30.12
35 DAYS	6.79	1.06	1.64	0.69	19.11

Kitchen waste +Cowdung

RATIO 1:0.75	PH	N	P	K	O.C
7 DAYS	5.90	0.19	0.26	0.16	43.69
21 DAYS	6.04	0.31	0.67	0.27	29.92
35 DAYS	6.71	0.84	1.23	0.49	20.64

Kitchen waste+cocopeat

RATIO 1:0.75	PH	N	P	K	O.C
7 DAYS	5.40	0.27	0.17	0.15	54.64
21 DAYS	5.86	0.44	0.40	0.21	47.61
35 DAYS	6.44	0.87	0.67	0.34	34.67

Kitchen waste +soil +earthworm

RATIO 1:0.75	PH	N	P	K	O.C
7 DAYS	5.91	0.16	0.29	0.11	38.64
21 DAYS	6.44	0.34	0.42	0.25	29.61
35 DAYS	6.73	0.7	0.93	0.37	18.66

Kitchen waste+compost maker

RATIO 1:0.75	PH	N	P	K	O.C
7 DAYS	5.31	0.26	0.34	0.18	40.69
21 DAYS	5.69	0.48	0.53	0.34	28.62
35 DAYS	6.29	1.01	1.59	0.64	17.61

Kitchen waste +Cowdung

RATIO 1:0.50	PH	N	P	K	O.C
7 DAYS	5.40	0.14	0.21	0.11	42.19
21 DAYS	5.54	0.26	0.62	0.22	28.42
35 DAYS	6.21	0.79	1.18	0.44	19.14

Kitchen waste+cocopeat

RATIO 1:0.50	PH	N	P	K	O.C
7 DAYS	4.94	0.22	0.12	0.10	53.14
21 DAYS	5.36	0.39	0.35	0.16	46.11

35 DAYS	5.94	0.82	0.62	0.29	33.11
---------	------	------	------	------	-------

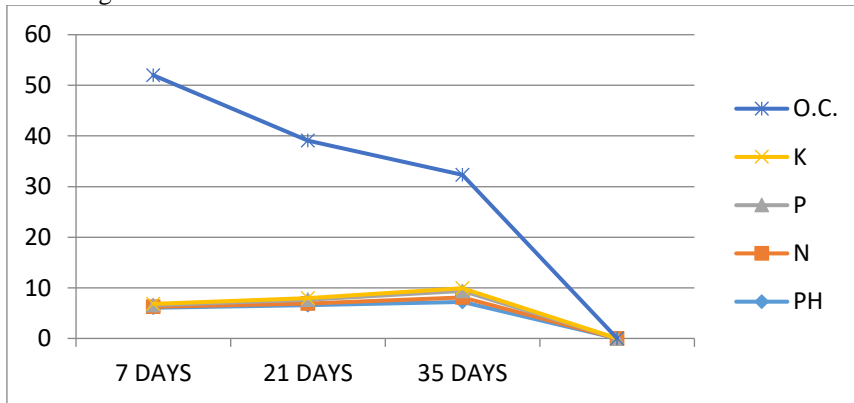
Kitchen waste +soil +earthworm

RATIO 1:0.50	PH	N	P	K	O.C
7 DAYS	5.41	0.11	0.24	0.07	37.14
21 DAYS	5.94	0.29	0.37	0.20	28.11
35 DAYS	6.23	0.65	0.87	0.32	17.16

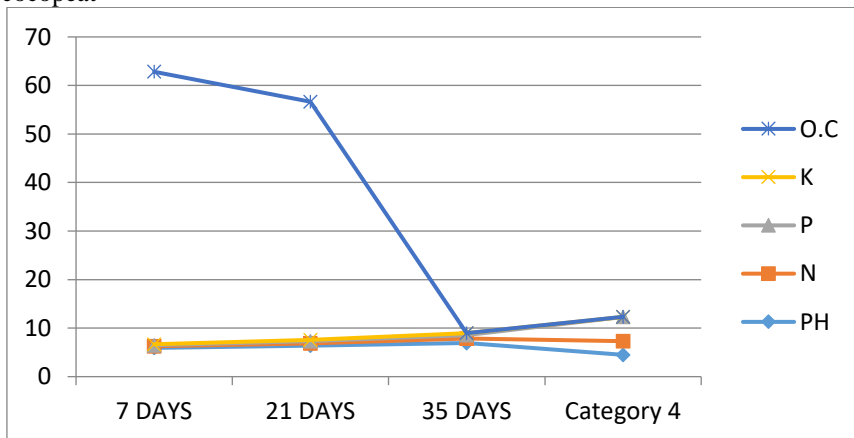
Kitchen waste+compost maker

RATIO 1:0.50	PH	N	P	K	O.C
7 DAYS	4.81	0.21	0.29	0.13	39.19
21 DAYS	5.19	0.43	0.48	0.29	27.12
35 DAYS	5.79	0.96	1.54	0.59	16.11

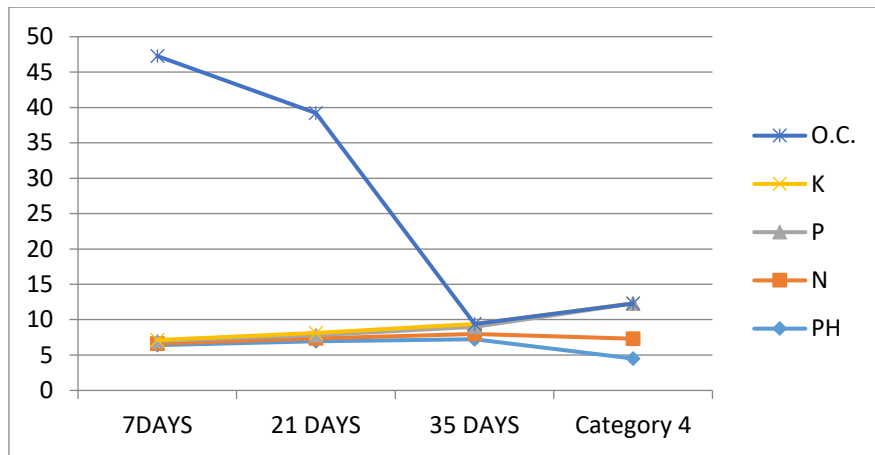
Kitchen waste +Cowdung



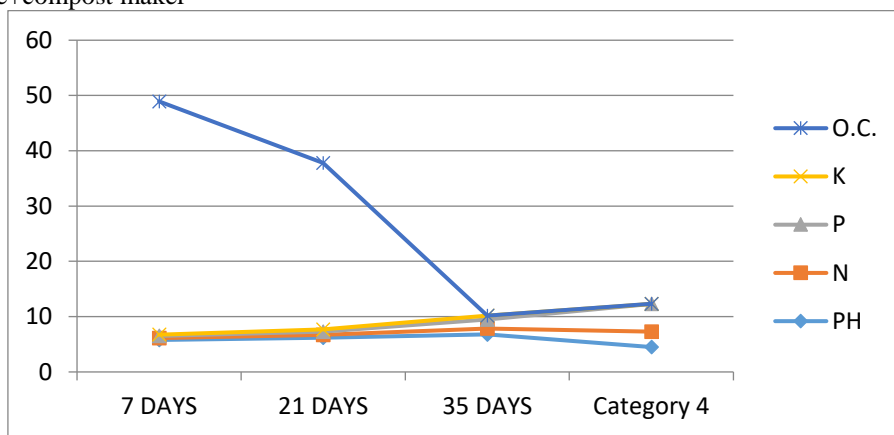
Kitchen waste+cocopeat



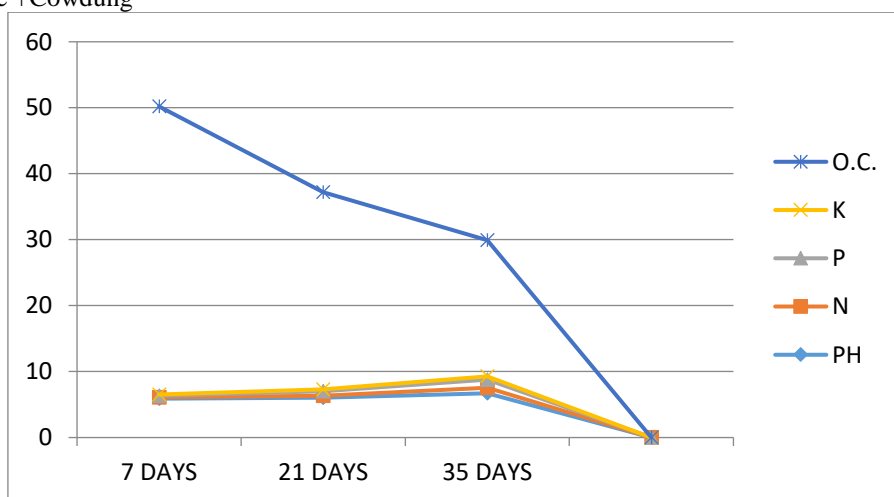
Kitchen waste +soil +earthworm



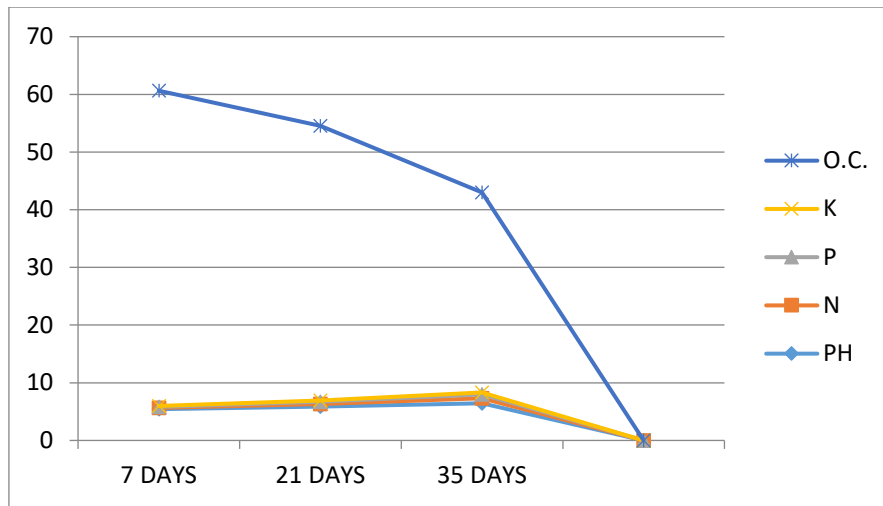
Kitchen waste+compost maker



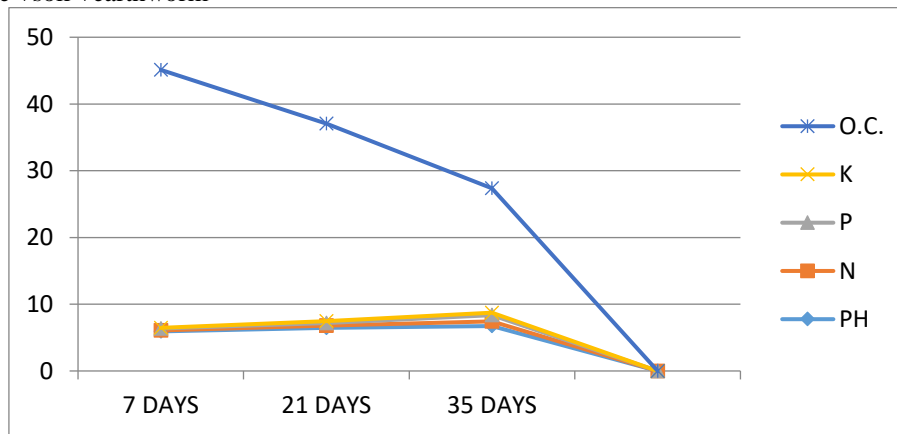
Kitchen waste +Cowdung



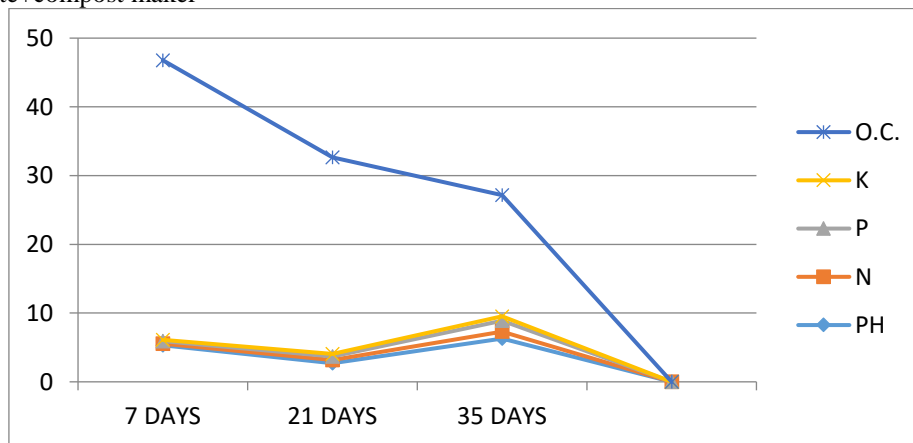
Kitchen waste+cocopeat



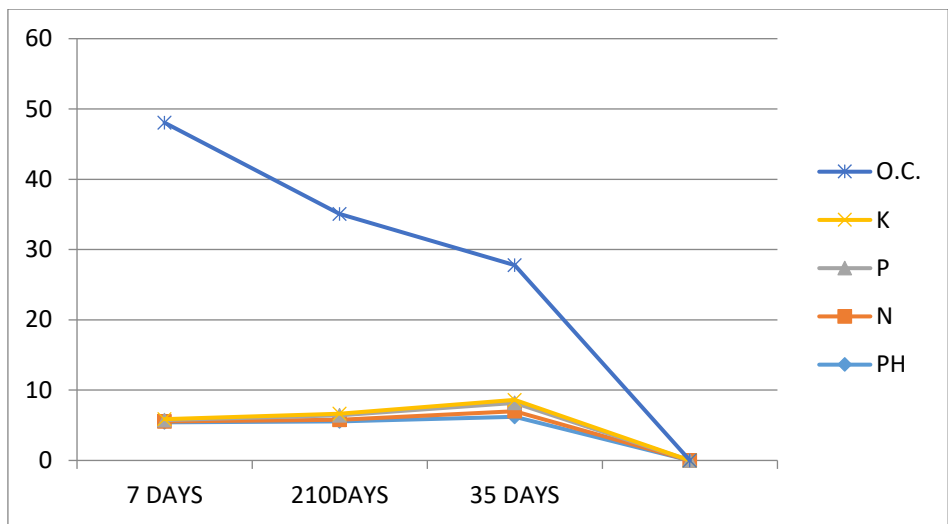
Kitchen waste +soil +earthworm



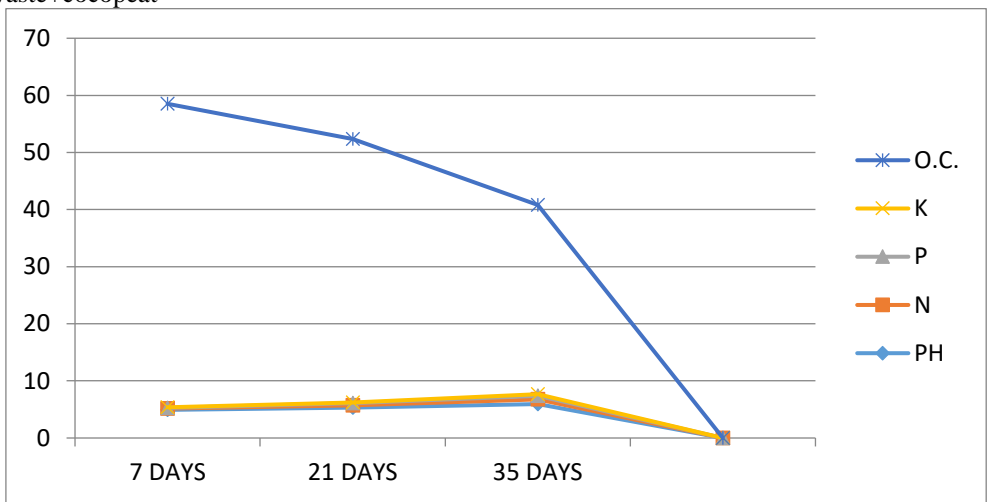
Kitchen waste+compost maker



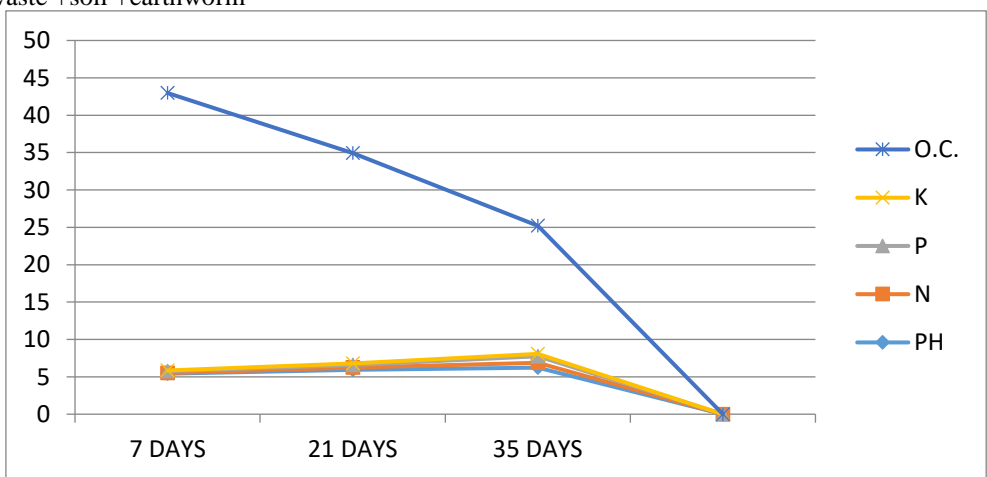
Kitchen waste +Cowdung



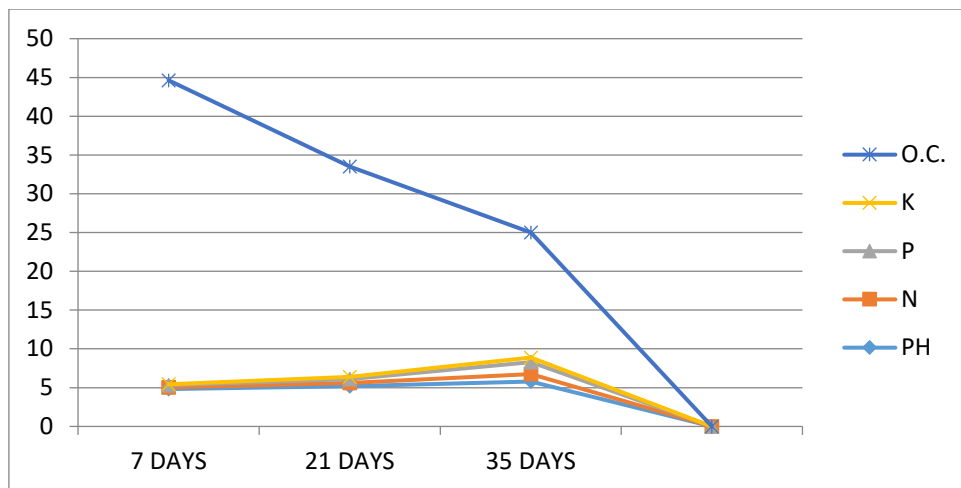
Kitchen waste+cocopeat



Kitchen waste +soil +earthworm



Kitchen waste+compost maker



### 5. CONCLUSION

From our result we conclude that the nutrient content of the compost from the composition of kitchen waste and compost maker was high. Experimental data provides a sound basis that nutrient contents are high in kitchen waste + compost maker composition . These will reducing the load on common waste treatment plant and creates pollution free environment

### REFERENCES

- [1] Nardi, S., F. Morari, A. Berti, M. Tosoni, and L. Giardini (2004) Soil organic matter properties after 40 years of different use of organic and mineral fertilizers . European Journal of Agronomy 21,357-367
- [2] Weber, J., A. Kaeczewska, J. Drozed, M. Licznar, S. Licznar, E. Jamroz, and A. Kocowicz (2004) Agricultural and ecological aspects of a sandy soil as affected by the application of municipal solid waste composts. Soil Biology and Biochemistry, 39, 1294-1302
- [3] Sunkee Han, Hang-Sik Shin (2004) Performance of an innovative two stage process converting food waste to Hydrogen and Methane. Journal of the Air and Waste Management Association, 54, 242.